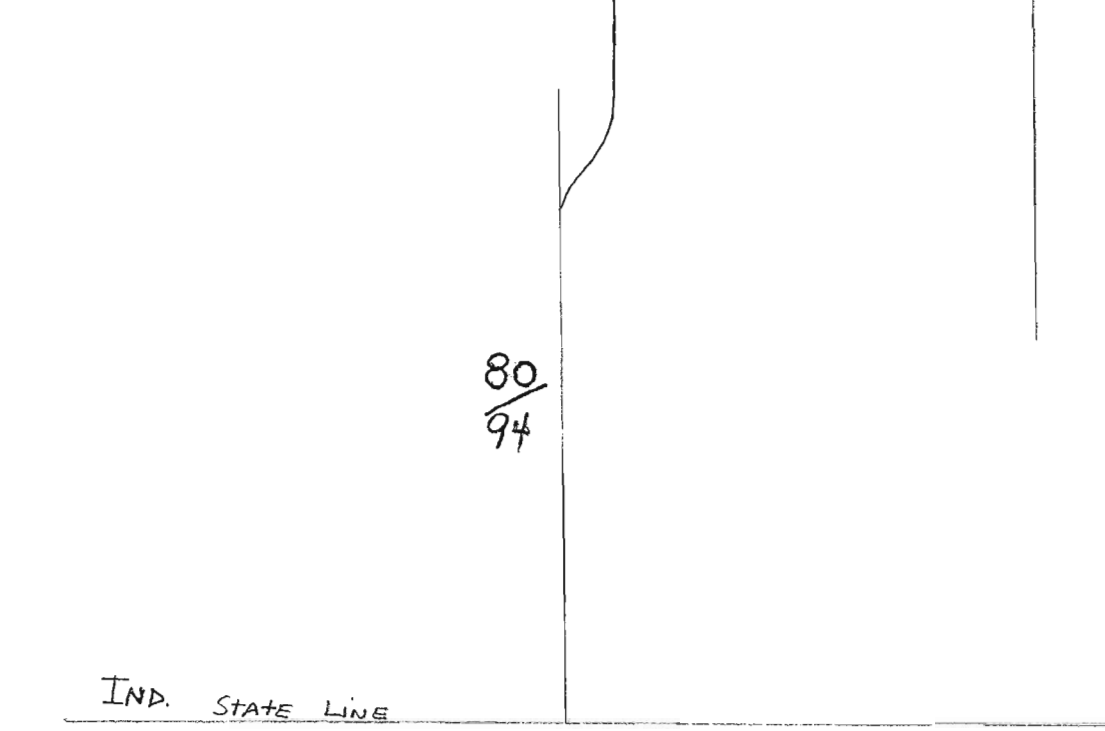
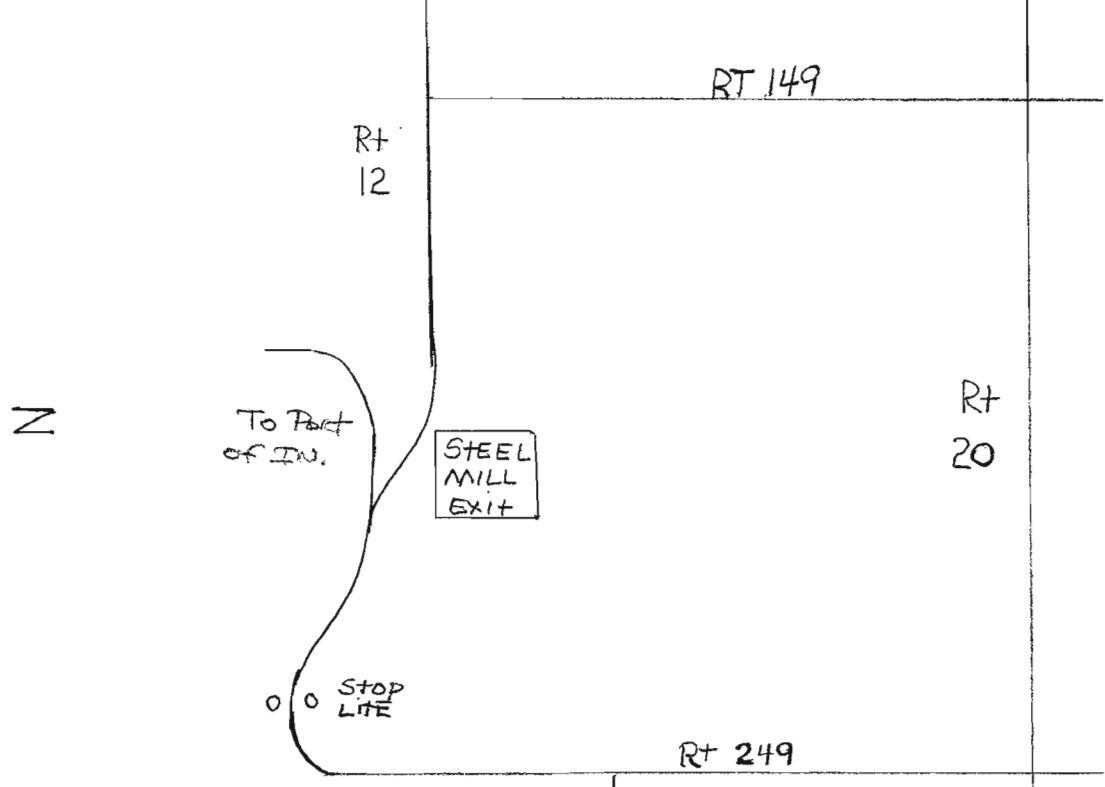
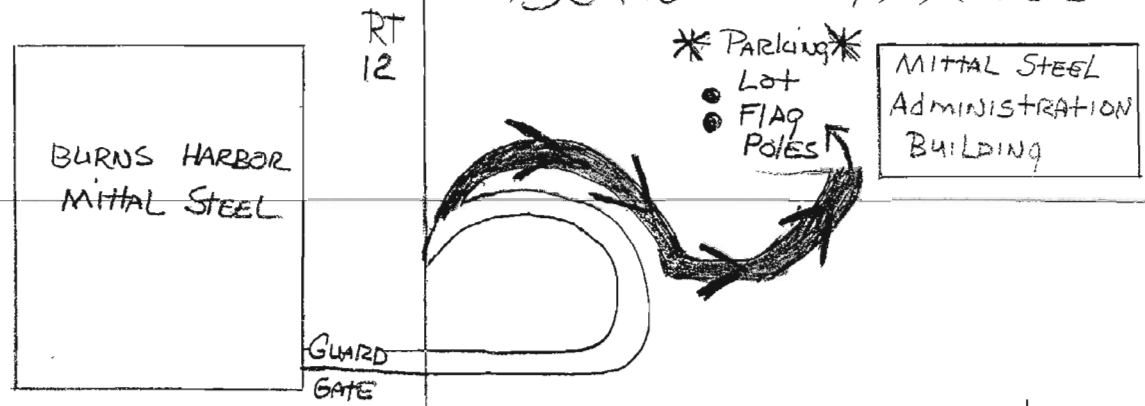


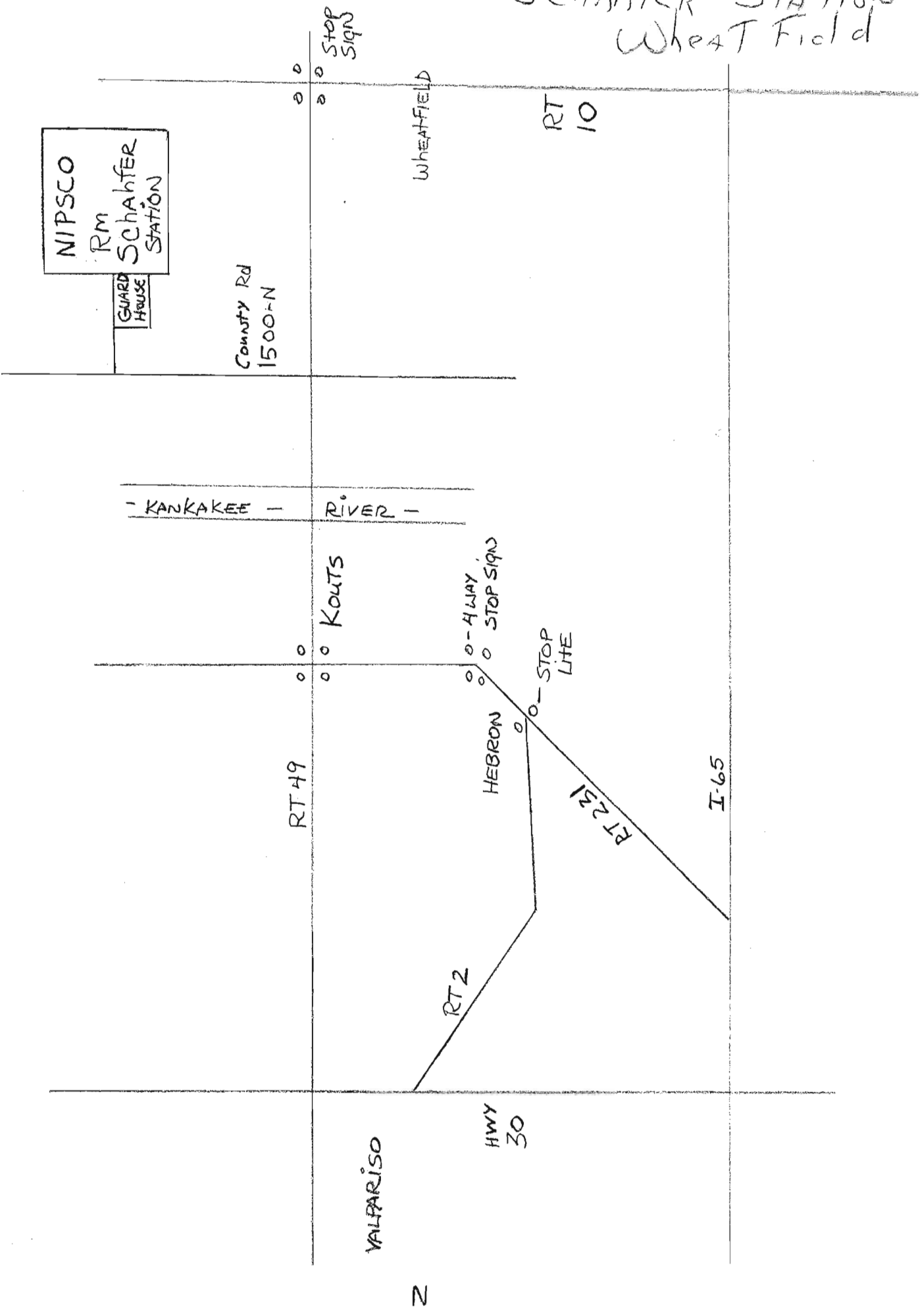
BURNS HARBOUR - MITTAL STEEL



IND. STATE LINE
ILL.

W

S Schahfer Station
Wheat Field



NIPSCO
RM
Schahfer
STATION

GUARD
HOUSE

COUNTY RD
1500-N

WHEATFIELD

RT
10

- KANKAKEE - RIVER -

KOUTS

ALWAYS
STOP SIGN

STOP
LITE

RT 49

HEBRON

RT 2

RT 231

I-65

VALPARISO

HWY
30

N

W

E

STANDARD AVE

BP Amoco

GATE 42

SAFETY TRAIN

BP Amoco

STOP LITE

BRIDGE

GAUDED GATE

PARKING LOT

STOP LITE

4WAY STOP SIGN

LTV

Riley Rd

STOP LITE

STOP LITE

DICKS RD

RAMP

RILEY Rd

COKE ENERGY

LOT 40

INLAND STEEL PLANT 2

LOT 30

MICH AVE

INLAND STEEL PLANT 2

BP Amoco

CLINE AVE

80-94

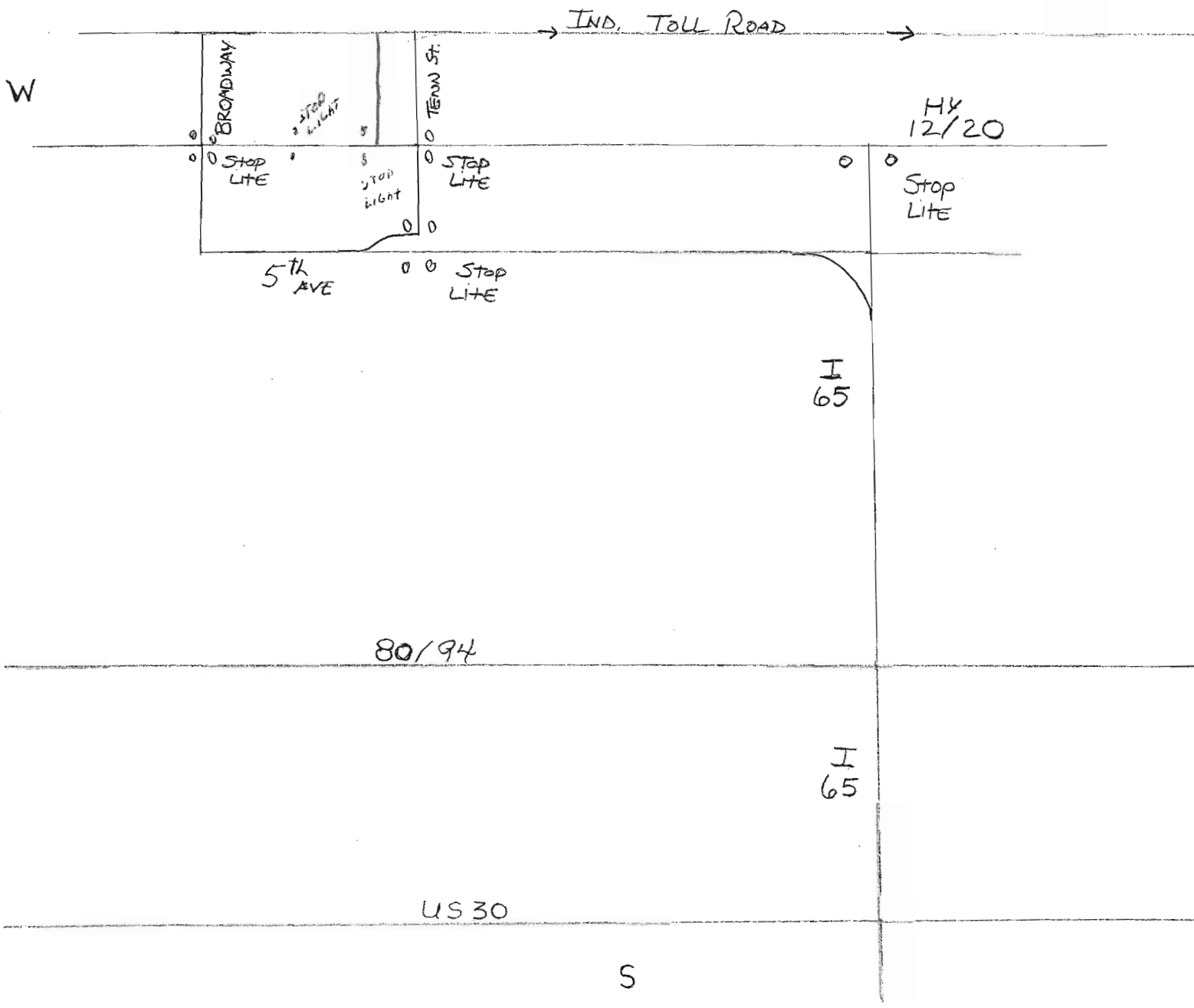
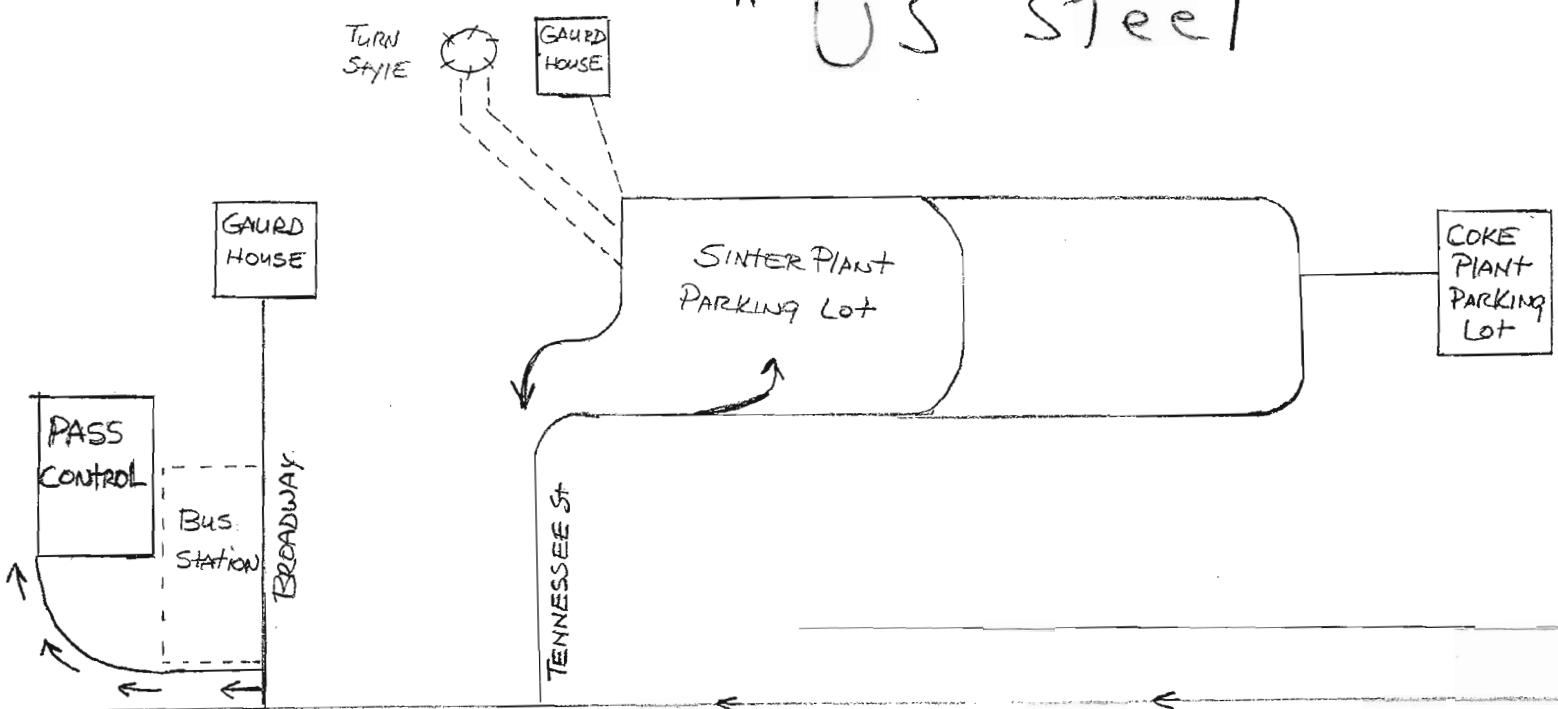
80-94

S

CALUMET AVE W

TO TALL RD

" US Steel



MICHIGAN CITY - NIPSCO

N

W

NIPSCO MICH. CITY
GEN STATIONS

CONTRACTOR
PARKING

GUARDED
GATE

STOP
SIGN

RA9 TOPS
AUTO
MUSEUM

Light
HOUSE
MALL

W 4th St

WABASH ST

RT 12

RT 12

520

Flashing
LITE

Flashing
LITE

RT 20

80/94

